



Copper Mountain Mining Corporation
Suite 1700, 700 West Pender Street
Vancouver, BC V6C 1G8
Telephone: (604) 682-2992
Facsimile: (604) 682-2993
Web Site: www.CuMtn.com
TSX: CUM

COPPER MOUNTAIN UPDATES CONSTRUCTION PROGRESS ON SECONDARY CRUSHER

Vancouver, British Columbia – Mar 25, 2014 – Copper Mountain Mining Corporation (TSX: CUM) (the “Company” or “Copper Mountain”) announces that construction of the new permanent secondary crusher at the Copper Mountain mine located in southern British Columbia continues to move forward as planned and on schedule. Purchase orders for all of the major mechanical and electrical components have been placed. The main components of the crusher have arrived in Canada and have been transported via rail to Kamloops, BC where they are being prepared for transportation by a specialized truck to the mine site. The lower bowl assembly is the largest component piece of the crusher and weighs over 100 tonnes. Due to its size and weight special road permits were provided by the Department of Transportation in a timely manner to meet the schedule for the highway transportation to the mine site. These permits were received early last week and the lower bowl assembly has now been transported to the mine site. The Company engaged Nickel Bros Heavy Lifting and Transportation to complete this leg of the transportation which entailed closing the main highway between Kamloops and Princeton in 20km sections as the convoy moved down the road. It took four nights to make the 200 kilometer trip, because the transportation had to occur between midnight and 5 am each night to minimize traffic disruptions along the route.

This crusher will be the largest cone crusher installed in western Canada and has the ability to crush the 6 inch rock from the primary crusher down to 2 inches in size. The new crushing facility is designed to operate at a rate of 2,800 tpd and is designed to meet the most demanding and high tonnage applications. Foundation work for the Crusher Slab is complete and it is being prepared for placement of the newly arrived lower bowl assembly. Once the lower bowl assembly is installed, building contractors will be mobilized to start the building erection. Following the building erection, the new conveyor system installation will commence in the spring time. The total cost of construction for the secondary crusher facility is estimated to be \$40 million and construction is expected to be completed by mid-summer. Once installed, 100% of the mill feed will be sized to the 2 inch range, which will allow the mill to operate consistently at or above design capacity rates of 35,000 tpd.

The short term mitigating measures implemented in 2013 to increase mill throughput continue to be successful with January and February’s operational results being in line with the production expectations.

About Copper Mountain Mining Corporation:

Copper Mountain’s flagship asset is the Copper Mountain mine located in southern British Columbia near the town of Princeton. The Company has a strategic alliance with Mitsubishi Materials Corporation who owns 25% of the mine. The Copper Mountain mine commenced production in the summer of 2011 and has continued to improve its operations since startup. The 18,000 acre site has a large resource of copper that remains open laterally and at depth. The mine has significant exploration potential that will need to be explored over the next few years to fully appreciate the properties full development potential. Additional information is available on the Company’s web site at www.CuMtn.com.

On behalf of the Board of
COPPER MOUNTAIN MINING CORPORATION

“Jim O’Rourke”

Jim O’Rourke, P.Eng.
Chief Executive Officer

For further information, please contact:

Galina Meleger, Corporate Communications 604-682-2992 ext.224 Email: Galina@CuMtn.com or
Rod Shier, Chief Financial Officer 604-682-2992 ext.222 Email: Rod@CuMtn.com

Website: www.CuMtn.com

Note: This release contains forward-looking statements that involve risks and uncertainties. These statements may differ materially from actual future events or results. Readers are referred to the documents, filed by the Company on SEDAR at www.sedar.com, specifically the most recent reports which identify important risk factors that could cause actual results to differ from those contained in the forward-looking statements. The Company undertakes no obligation to review or confirm analysts’ expectations or estimates or to release publicly any revisions to any forward-looking statement

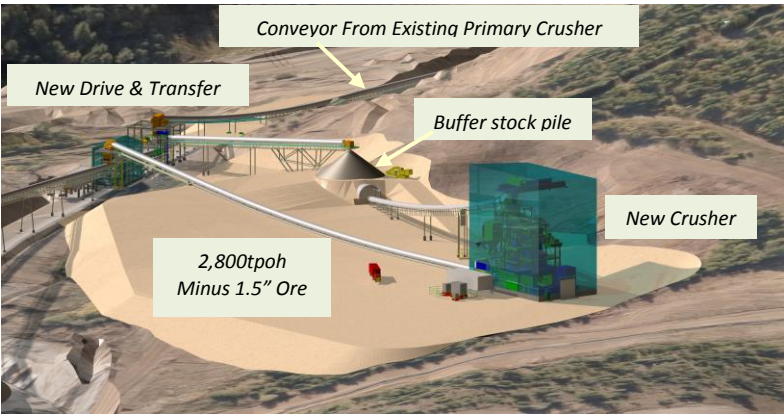
COPPER MOUNTAIN UPDATES CONSTRUCTION PROGRESS ON SECONDARY CRUSHER



Unloading of lower bowl assembly in Kamloops, BC



Placement of lower bowl assembly on transport trailer



Schematic of secondary crusher addition



North side of secondary crusher foundation work at mine site