



**Copper Mountain Mining Corporation**

Suite 1700, 700 West Pender Street

Vancouver, BC V6C 1G8

Telephone: (604) 682-2992

Facsimile: (604) 682-2993

**Web Site: [www.CuMtn.com](http://www.CuMtn.com)**

**TSX: CUM**

---

## **COPPER MOUNTAIN CONSTRUCTION OF SECONDARY CRUSHER ON SCHEDULE AND BUDGET**

**Vancouver, British Columbia – June 18, 2014 – Copper Mountain Mining Corporation (TSX: CUM)** (the “Company” or “Copper Mountain”) announces that construction of the new permanent secondary crusher at the Copper Mountain mine located in southern British Columbia continues to move forward as planned and on schedule and budget. All major pieces of the crushing equipment have been delivered to site and substantial completion of the crusher building has been achieved. The lower bowl assembly, which is the largest component piece of the crusher weighing in at over 100 tonnes, has been safely lifted into place. This paved the way for the upper main frame of the crusher to be installed with the help of one of the mine’s 240 ton haul trucks. (see photo next page). The existing one kilometer overland conveyor that transfers ore from the primary crusher to the mill feed stockpile has been successfully modified to accommodate the tie-in to the new secondary crusher. The installation of a new transfer chute was completed over a four day period without any interruption to the milling operation. This transfer chute is a critical component to the new system and is working well plus it will allow the current operation to continue with uninterrupted production for the balance of the secondary crusher construction period.

This crusher will be the largest cone crusher installed in western Canada and has the ability to crush the 6 inch rock from the primary crusher down to minus 2 inch in size. The new crushing facility is designed to operate at a rate of 3,000 tph and is designed to meet the high tonnage applications. The total cost of construction for the secondary crusher facility is estimated to be \$40 million and construction is expected to be completed by mid-summer. Once installed, 100% of the mill feed will be sized to the 2 inch range, which will allow the mill to operate consistently at or above design capacity rates of 35,000 tpd.

### **About Copper Mountain Mining Corporation:**

Copper Mountain’s flagship asset is the Copper Mountain mine located in southern British Columbia near the town of Princeton. The Company has a strategic alliance with Mitsubishi Materials Corporation who owns 25% of the mine. The Copper Mountain mine commenced production in the summer of 2011 and has continued to improve its operations since startup. The 18,000 acre site has a large resource of copper that remains open laterally and at depth. The mine has significant exploration potential that will need to be explored over the next few years to fully appreciate the properties full development potential. Additional information is available on the Company’s web site at [www.CuMtn.com](http://www.CuMtn.com).

On behalf of the Board of

**COPPER MOUNTAIN MINING CORPORATION**

*“Jim O’Rourke”*

Jim O’Rourke, P.Eng.

Chief Executive Officer

### **For further information, please contact:**

Galina Meleger, Corporate Communications 604-682-2992 ext.224 Email: [Galina@CuMtn.com](mailto:Galina@CuMtn.com) or

Rod Shier, Chief Financial Officer 604-682-2992 ext.222 Email: [Rod@CuMtn.com](mailto:Rod@CuMtn.com)

Website: [www.CuMtn.com](http://www.CuMtn.com)

Note: This release contains forward-looking statements that involve risks and uncertainties. These statements may differ materially from actual future events or results. Readers are referred to the documents, filed by the Company on SEDAR at [www.sedar.com](http://www.sedar.com), specifically the most recent reports which identify important risk factors that could cause actual results to differ from those contained in the forward-looking statements. The Company undertakes no obligation to review or confirm analysts’ expectations or estimates or to release publicly any revisions to any forward-looking statement

# COPPER MOUNTAIN UPDATES CONSTRUCTION PROGRESS ON SECONDARY CRUSHER



Loading Upper Main Frame into 240 ton haul truck in preparation for installation in Crusher Building



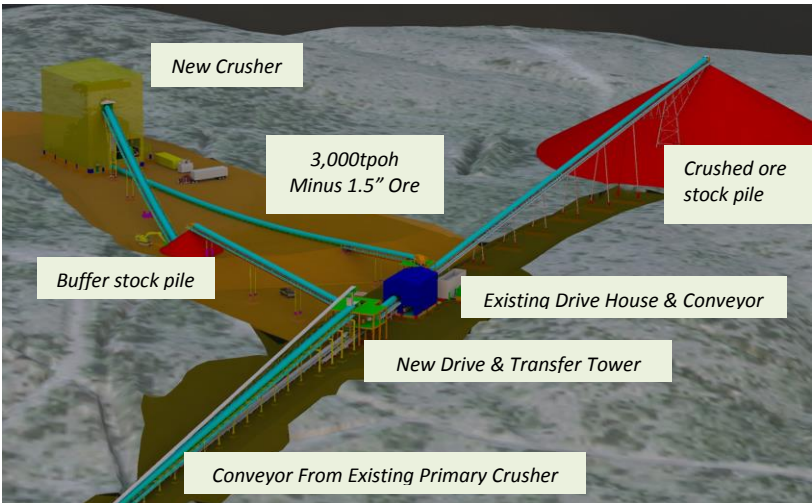
Lower and Upper Main Frames installed



Adjustment ring being rotated for installation



Prepping countershaft for installation



Schematic of secondary crusher addition



New Drive and Transfer Tower located on south side of drive house